



Geomatics

Digital Road Networks

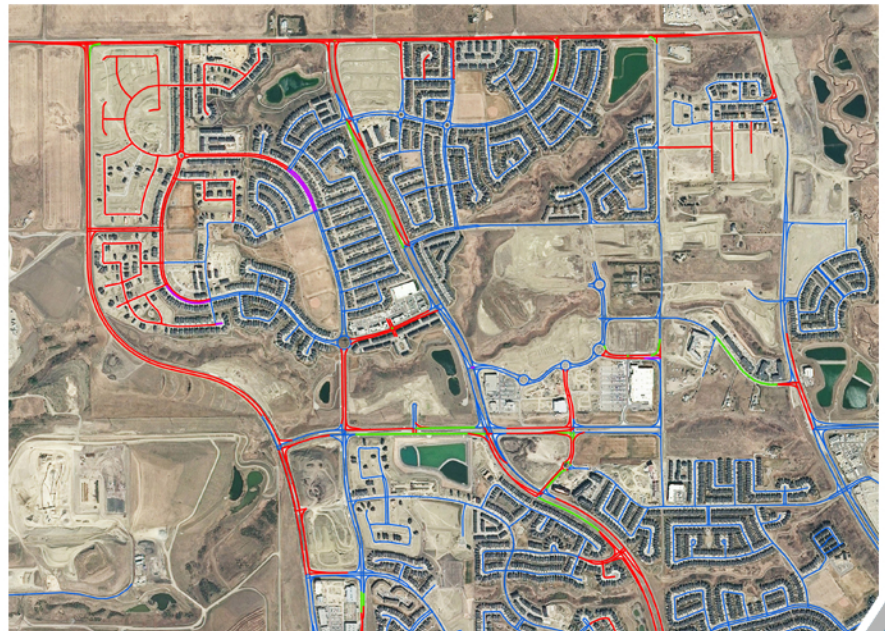
Creating and maintaining an accurate and up to date road network is a challenge, but it is a very important tool for communities to use in planning, budgeting, and other functions. Road data can be collected by satellites, but when you need high accuracy for features such as approaches, and accurate assessments of road surfaces and address ranges, the data needs to be collected on the road. Accurate and up to date addressing is becoming extremely important, both your online order and emergency services depend on the digital road network.

Whether you represent a small town or village, a municipality, or even an entire province, WH Geomatics has the technical expertise and on the ground experience to handle the creation, maintenance, and updating of your digital road network. WH Geomatics is currently updating and maintaining Alberta's digital road network as part of Alberta's contribution to the National Road Network. We deliver a high-precision end product that includes:

- Road segment names
- Address ranges
- Travel direction
- Number of lanes
- Road type, class, and jurisdiction
- Road surface
- Route number
- Structure types

To manage this data, Western Heritage has worked with ESRI to create a robust data framework. Road network data is collected using Trimble Equipment. This state of the art GPS data collection equipment allows us to acquire sub-meter accuracy.

We have experience developing custom add-ins tailored to your needs, and have developed various quality control procedures using Python to make sure delivery is correct and consistent between shape files and tables.



A digital road network showing recent changes



ISO 9001 Certified