

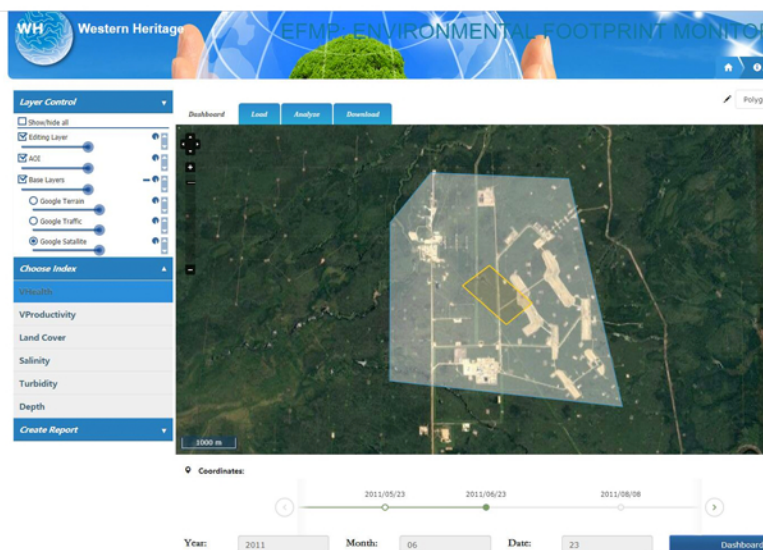


**Western
Heritage**

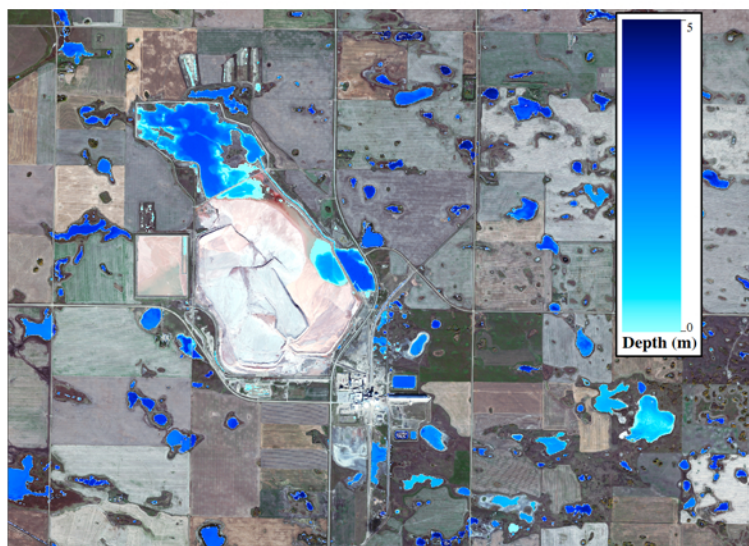
Environmental Footprint Monitoring

The WH Geomatics Environmental Footprint Monitoring Platform (EFMP) provides managers in industry and government with a tool to assist in the monitoring and reporting of environmental health within the development footprint they have defined.

The service utilizes high resolution satellite imagery and specialized remote sensing imagery analysis techniques to generate accurate and quantifiable information on the health and productivity of the environment within the project footprint. Designed to operate from initial planning stages to project closure, the service is essential for monitoring reclamation, cumulative impacts, and tailings. The monitoring frequency can be customised to address longer term, post closure monitoring.



Access info anywhere and anytime via a private web portal



Track environmental changes, such as surface water depth

- Monitor and track change of landscape disturbance and habitat integrity
- Generate current information on the health of terrestrial and aquatic communities
- Track progress of reclamation and project area environmental goals
- Satellite images provide a visual reference to support data
- Provides “big picture” analysis of entire project area using satellite images to provide a visual reference and support data
- Helps focus ground testing on areas of highest interest
- Ability to “look back” using archival images to compare project area footprint and health pre, during, and post- development
 - Web based platform provides constant access to information and ability to generate reports in-house and on demand



ISO 9001 Certified